



**CHATHAM COUNTY SAFETY NET PLANNING COUNCIL**

**PARTNERS FOR A CONNECTED COMMUNITY**

**Employers and Advocates  
Working Together to Improve  
Community Health**

June 29, 2016

# CHATHAM COUNTY SAFETY NET PLANNING COUNCIL

## **Who are we?**

**Partnership: hospitals, FQHCs, free clinics and other safety net providers/partners**

**Mission: Improve access to and quality of care for the un- and underinsured**

## **What do we do?**

**Annual Evaluation**

**Campaign for Healthy Kids and Families/CHIPRA**

**Health Information Exchange (ChathamHealthLink/GRACHIE)**

**Behavioral Health Clinical Collaboration Center (launching)**

**Coordinate projects/initiatives as needed**

# Campaign Coalition | December 2015

## Enrollment Assistance Partners

- Curtis V. Cooper Primary Health, Inc. (FQHC)
- Chatham County Health Department
- Chatham County Safety Net Planning Council
- St. Joseph's/Candler Health Systems-St. Mary's Community Center
- Memorial Health University Medical Center-Emergency Department
- City of Savannah-Moses Jackson Advancement Center
- Step Up Savannah
- Centro Hispano de Savannah
- MedBank Prescription Assistance
- Economic Opportunity Authority: Head Start

## Outreach Partners

- WTOC-TV
- Memorial Health Athletic Trainers
- Chatham County Juvenile Court
- Other Non-Profits
- SCCPSS Coaches & Health Teachers
- WSAV-TV
- St. Joseph's/Candler Health Systems
- City & County Public Information & Recreation Offices
- Memorial Health University Medical Center, ED
- First Hispanic Baptist Church of Savannah
- Savannah-Chatham County Public School System  
(PTA, Nurses, Social Workers, Counselors, Title One Parent Facilitators)
- Chatham County Live Oak Public Library System



# CHATHAMHEALTHLINK: CURRENT PARTNERS

## Hospital Systems

- Memorial Health
- ~~St. Joseph's / Candler~~

## Federally Qualified Health Centers

- Curtis V. Cooper
- J. C. Lewis

## Community Health Organizations

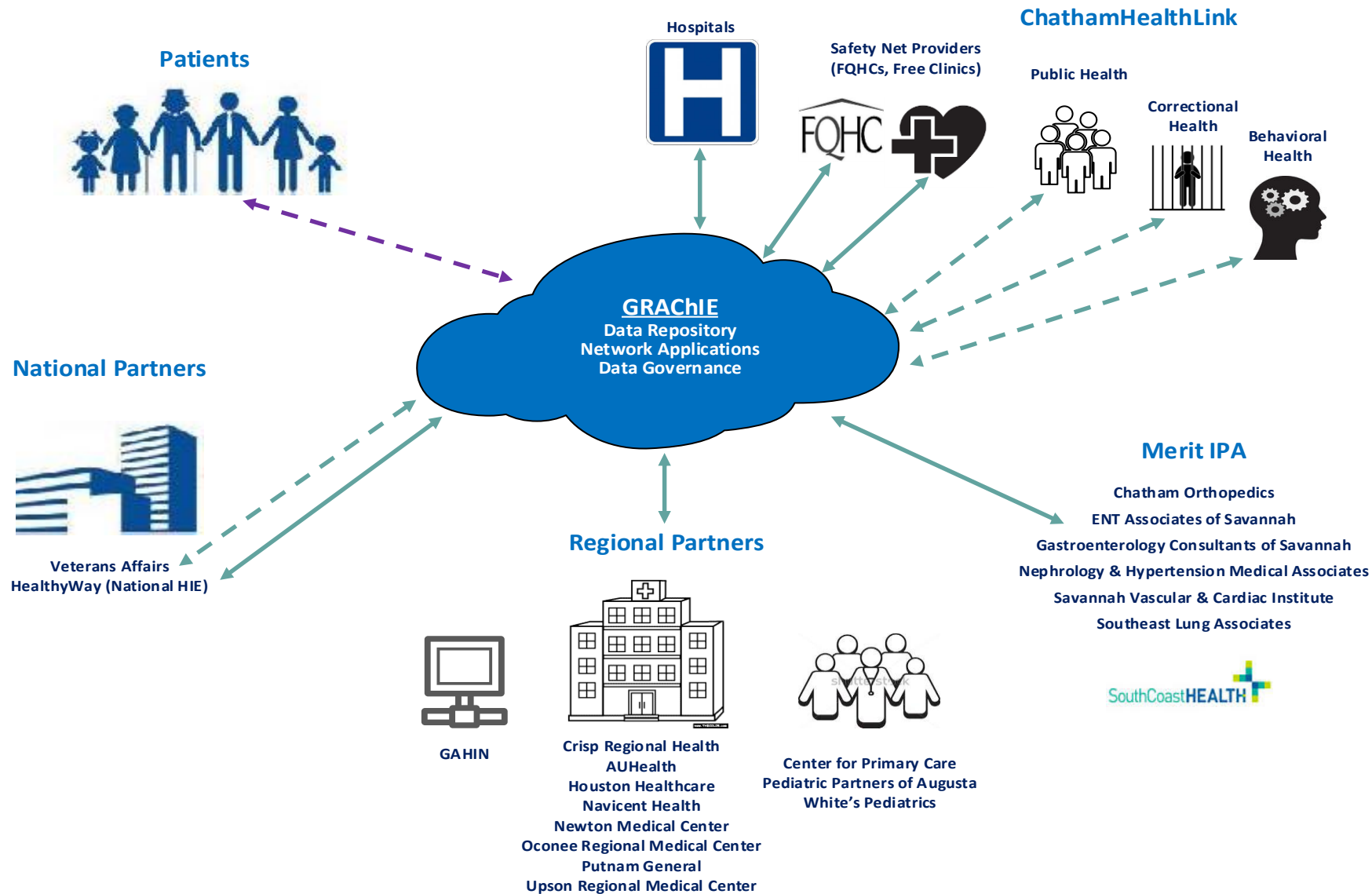
- Community Health Mission

## Non-traditional Partners

- Chatham County Detention Center (onboarding)
- Gateway Behavioral Health (contracting)

# GRACHIE – CHL

## Adding Value through Connectivity in Chatham County



# CLINICAL COLLABORATIVE CENTER

## INTER-AGENCY INTER-ORGANIZATIONAL INTER-DEPARTMENTAL

### **What:**

A one stop resource for agency staff when the usual and routine referral attempts have failed

### **Goal:**

Identify and detail both real and perceived gaps between agencies

Collect and aggregate information about gaps

Report aggregated data on gaps to the Safety Net Planning Council and Regional Collaborative for action

### **When to use:**

Can't locate a program that meets an individual's mental health and/or substance use disorder needs

Located a program but individual didn't qualify

Located a program, made a referral, and a warm hand-off – but individual was later rejected or lost to follow up



# CLINICAL COLLABORATIVE CENTER

INTER-AGENCY  
INTER-ORGANIZATIONAL  
INTER-DEPARTMENTAL

## **What the center is not:**

A duplication of the active work of existing organizations and agencies.

## **What the center is:**

A structure for mapping the actual and perceived gaps  
in the system of care

## **Recovery**

Individuals improve their health and wellness, live self-directed lives and strive to reach their full potential